

DEVELOPING THE FUTURE  
SINCE 1976



# NAWARAT PATANAKARN

PUBLIC COMPANY LIMITED



NAWARAT

# CONTENT

NAWARAT PATANAKARN PUBLIC COMPANY LIMITED



**4 - 9**

## **NAWARAT WORLD**

WHO WE ARE & WHAT WE DO

History

**4-5**

Message  
from CEO

**6-7**

Message  
from the President

**8**

Vision, Mission  
& Core Value

**9**



**12 - 49**

## **NAWARAT SUCCESS**

PRODUCTS AND SERVICES

### **CONTRACTING:**

Industrial Work

**12-19**

Civil Work

**20-23**

Tunneling and  
Underground Work

**24-27**

Building Work

**28-31**

Marine Work

**32-35**





## 50 - 57

### NAWARAT COMMUNITY

OUR PRACTICE AND  
RESPONSIBILITY

Sustainable Development (SD)

Corporate Governance (CG)

Corporate Social Responsibility  
(CSR)



## 58 - 60

### NAWARAT AFFILIATES

SUBSIDIARY & ASSOCIATED  
COMPANIES



## 61 - 63

### NAWARAT STANDARD

AWARDS AND CERTIFICATION  
Project References



## 64

### CONTACT

Maps

Overseas Work **36-39**

Design Service, **40-41**  
Engineering, Procurement  
& Construction (EPC)

Precast & Prestressed **42-43**  
Concrete Production

Steel & Structure **44-45**  
Fabrication

Property Development **46-47**

Food & Restaurant **48-49**

# HISTORY

## NAWARAT PATANAKARN PUBLIC COMPANY LIMITED

### 1976 | 31 MAY

Founded by Mr. Mana Karnasuta with registered capital of Baht 4 million to provide general construction services.

### 1994 | 20 FEBRUARY

Full scale precast concrete production plant and steel fabrication plant were established in Bangnampriao, Chacheangsao province to support internal construction works as well as supplying to other clients.

### 1995 | 27 SEPTEMBER

Listed on the Stock Exchange of Thailand (SET). Company increased its registered capital to Baht 500 million with initial offering to public.

### 2001 | 28 JUNE

Utility Business Alliance Company Limited was established as subsidiary to provide design, construction and operation/maintenance services in the area of wastewater treatment.

### 2006 | 6 SEPTEMBER

C.I.N. Estate Company Limited, a Joint Venture with Charn Issara Development Public Company Limited, was established to develop a high rise condominium "The Issara Ladprao" as its first project. The second project was "ISSI Condo" on Suksawat Road in Bangkok.

### 2013 | 1 APRIL

Nawarat increased its registered capital to Baht 2,221.6 million.

### 2013 | 5 APRIL

Mana Patanakarn Company Limited, was established as a subsidiary to expand its business in property development with "Baranee" for low rise and "Aspen" for condominium property.

### 2013 | 12 DECEMBER

Advance Prefab Company Limited, was established as a subsidiary to produce prestressed and precast concrete product and other construction products with modern technology to support both internal and third party customers.

### 2016 | 17 NOVEMBER

Taste Maker Company Limited, was established as subsidiary for food industry including restaurant and packaged consumer products for both domestic and export market.

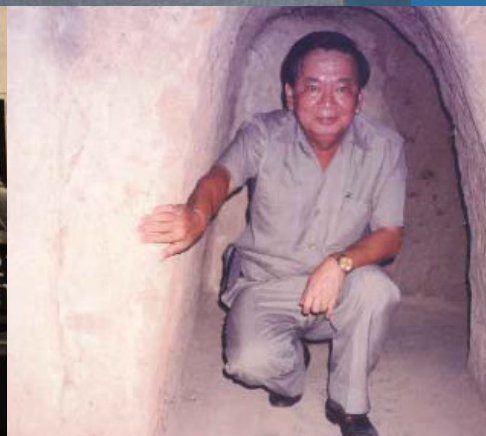
### 2016 | 31 DECEMBER

The Company has raised its registered capital to Baht 2,585,481,515 and paid-up capital to Baht 2,585,481,515 which divided to 2,585,481,515 common shares at the par value of Baht 1 per share.

### 2017

The Company has obtained Corporate Governance Rating at "4 Star" Since 2017.





Mr. Mana Karnasuta  
FOUNDER



# MESSAGE FROM CEO

---

For over four decades, Nawarat Patanakarn PCL. has been on its steady path, through various projects and challenges, to become the trusted construction company it is known for today. Yet we believe that it is never the limit of what we can aspire to be. Since the foundation of the company, the shared values we held has always been the nurturing of people in proper environment, the recognition of member's potential, and the responsibility to society. This is what brought us here, and with clear visions, is also the base for us to ascend higher, to provide for society, and to make us proud in our shared achievements to come.

The ever shifting landscape of construction business, during the thriving economy from 3.0 to 4.0 and fierce competition, leads us to revise the corporate's vision statement with consciousness in mind; "A corporate with passion to grow as a leader in construction and diversified promising business based on valuable contribution to the prosperity and social responsibility of all."

It is once again the effort which requires the participation from all employees and stakeholders to achieve. Combined the people's effort with the passion to improve, the keys to the vision can be summarized as Quality, Service, Innovation, and Peak Performance.

Quality – the essential factor to be expected as standard. Exceptional quality delights customers, helps their growth, and retains their patronage.

Service - the bridge connecting customer's trust to finished product. With the services in mind, we provide customers with satisfying delivery of solutions.

Innovation - the driving force behind our long term growth. We always adjust or seek better ways to improve the process or the finished product.

Peak Performance - the willingness to utilize our best potential. It is our commitment to push ourselves as individuals and as a corporation to do our best.

In order to reach the vision, it is by the relentless pursuit of excellence. The people and staffs with their experiences, perseverance, and the environment of safety and encouragement, join forces to provide customers versatile approaches with their best interests in mind, cutting costs and improving efficiencies at every opportunity. The responsibility to society is also among the top priorities. The integrity on both individual and corporate levels resonates in attracting great members, great customers, and even greater opportunities in every business and every industry.

We accumulated our expertise on years of diverse construction works, adaptable application of our strengths, and complete value chain fulfillment. Those, along with the set vision statement, will propel us to establish presence of promising construction firm and thrive in ASEAN region, and later on the global scale. We believe that the business expansion, led by our core strengths and upcoming opportunities, would bear positive results to everyone.

As per our motto, "Building a better future together," this belief is shared among our executives, our employees, and our late founder, Mr. Mana Karnasuta. He sought to provide guidance through examples of passion for excellence. This hopeful light will always remain with us and will continue to translate into tremendous success.

This is Nawarat Patanakarn, a company with a proud past and a bright future.





Mr. Polpat Karnasuta  
CEO



# MESSAGE FROM THE PRESIDENT

---

In the midst of highly competitive industry, Thailand's construction market keeps on growing in parallel with the growth of the country and ASEAN. Since establishment over four decades ago, Nawarat Patanakarn PCL. has been rooting its reputation, experiences, know-how, track records, and networks under strong leadership through thick and thin of Thai economy. Not only relying on engineering skill that provides the basis of our competitiveness, but also management skill and soft skill, all of which are equipped to strengthened our people to be able to breakthrough any new challenges and difficulties.

To be among the top construction contractors, it requires continuous development in all aspects, especially the human capital which is always the key success factor of the business. With endless stream of new technology emerged and adopted by all industry's contenders, we believe that the core value of any company lies with its employees. This employee value is emphasized by refined code of conduct, supportive society, safe work condition and wellbeing, and also the environment consciousness. We can enable the fullest potential of employees, creating willingness to support the company as our internal strengths.

Approximately 70% of our portfolios are government and state enterprises projects thus the project owners are various agencies such as Electricity Generating Authority of Thailand (EGAT), Bangkok Metropolitan Administration (BMA), Metropolitan Waterworks Authority (MWA), Royal Irrigation Department (RID), Highway Department, PTT Group, etc. We also work as partner and subcontractor with multinational EPC contractors in many large scale and sophisticated projects. The remaining portion of our customers are private companies in manufacturing, petrochemical, property development, commercial retail, hospitality, healthcare, etc. Our works are not limited in Thailand but also abroad, in Myanmar, Laos, Cambodia, Vietnam and the UAE. Recently, we have expanded our business through subsidiaries Advance Prefab Co., Ltd. on manufacturing of precast concrete products, Mana Patanakarn Co., Ltd. on property development, and Utility Business Alliance Co., Ltd. on wastewater treatment plant turnkey design and construction with operation and maintenance services. Besides vertical and horizontal diversification, we have also invested in food business under Taste Maker Co., Ltd. to spread our opportunity and risk.

Given that our majority of business is coming from Government's spending, we can anticipate substantial opportunities incoming. The government budget planned for infrastructure development in many areas includes transportation, logistics, energy and power, utilities, water management, etc. All of which are in need for the country to grow are expected to be released for construction. With our



expertise in these fields, we foresee prosper future of our company to grow along.

Thai contractors are the third largest exporters of contracting business after Malaysia and Singapore. The AEC is inevitable and, like any change, it will have both positive and negative impact on our business. Contractors will need to adjust themselves to the open market system in the short term. In the long term, the open market would open up more opportunities for Thai contractors. Thailand is strategically located in the center of ASEAN, and with growing demand for construction work in CLMV, the AEC's policy will make it easier for Thai contractors to work in these countries.

We are well aware that there are always rooms to ameliorate, to further develop competency, as well as to use our strength in capturing opportunities and adapting to the ever changing needs of the market both local and overseas. We plan for sustainable growth in construction business and seeking for new frontiers to expand our horizon of business, both in Thailand and ASEAN, to diverse sources of revenue, a healthier margin, lower average fixed cost, and to create higher value for our stakeholders.

**Mr. Mongkol Peerasantikul**  
PRESIDENT

---



## VISION

A corporate with passion to grow as a leader in construction and diversified promising business based on valuable contribution to the prosperity and social responsibility of all.

## MISSION

1. Perform S.M.A.R.T. Specific; Measurable; Actionable; Realistic; Timely

2. Comprehensively conduct construction and other business with integrated values and have stable profitability.

3. Manage business professionally with modern technology for sustainable growth.

4. Operate with perseverance and with high competency under International Standards and timely delivery.

5. Manage business under the corporate governance principle and operate with integrity under the code of conduct to all stakeholders.

6. Health and safety are fundamental values of our organization on which we remain dedicated to further raise awareness and commitment at all levels.

7. Recognize the importance of the employees as human capital, encourage development of competency and cooperation among employees at all levels by establishing tangible motivation systems

giving opportunity and empowering young professionals to achieve aspired career

8. Always committed to a good corporate social and environmental responsibility

## CORE VALUE NWR 5-C

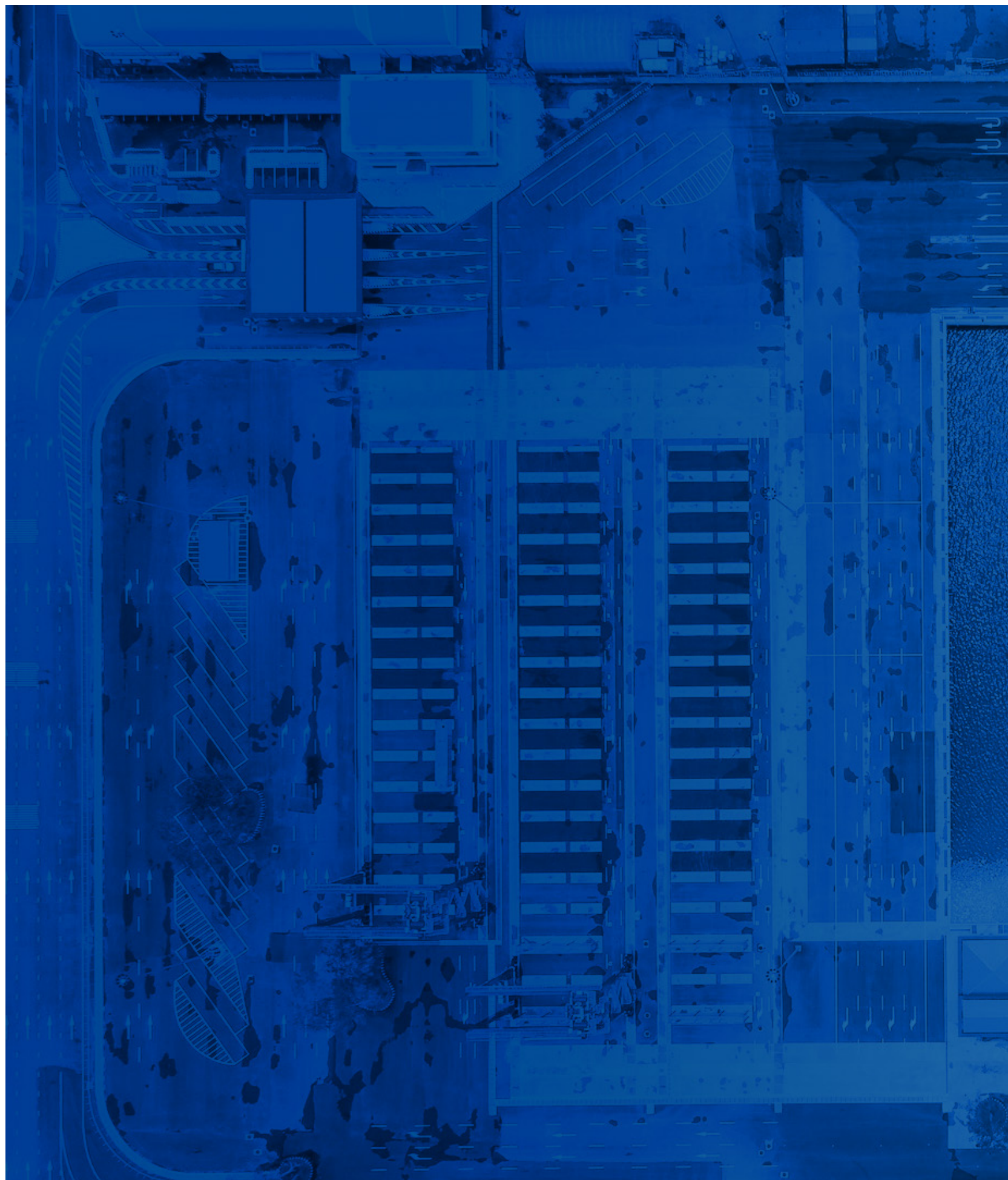
**CHANGE:** Knowing the needed Changes. Leading the Changes. Willing to Change.

**COLLABORATION:** Contributing, Coordinating & Cooperating Professionally with Trust and Respect

**CAN DO:** Everything is Possible. Creating, Encouraging, and Inspiring to Fulfill the Goals.

**COMMITMENT:** Passion for Excellent in Achieving Objectives. (Sales, Cost Management/Profit and Financial Management).

**CHAMPION:** Striving to Achieve Beyond Expectation Performance Levels. Be one's Own Boss. Consistently Improvement.







# PORTFOLIO

NAWARAT SUCCESS  
PRODUCTS AND SERVICES





## INDUSTRIAL WORK

# POWER PLANTS

Thailand's power sector has been a great influence on the Construction business. With NAWARAT's expertise as a Civil Work Subcontracting partner, it has been a part of the success of many Power Plants construction that includes various Combined-Cycle and Co-generation projects in Thailand. Highlights from our power plant sector includes experience with Electricity Generating Authority of Thailand (EGAT) for projects such as at Bangpakong, Wangnoi and Chana, as well as projects like Maemoh, Banpong, Bowin, ABP with IPP and SPP to feed the National grid or internal Industrial Estate demand. Expertise and experience gained by successfully delivering such projects has enabled the company to expand its reach to Cambodia through Sihanoukville Power Plant Project. NAWARAT aspires to expand its Scope of activities to other regions as well in the near future.



PROJECT: Mae Moh Power Plant Unit 4-7 Replacement





PROJECT: Wong Noi Combined Cycle Power Plant Block 4



PROJECT: South Bangkok Power Plant Replacement Project Phase 1





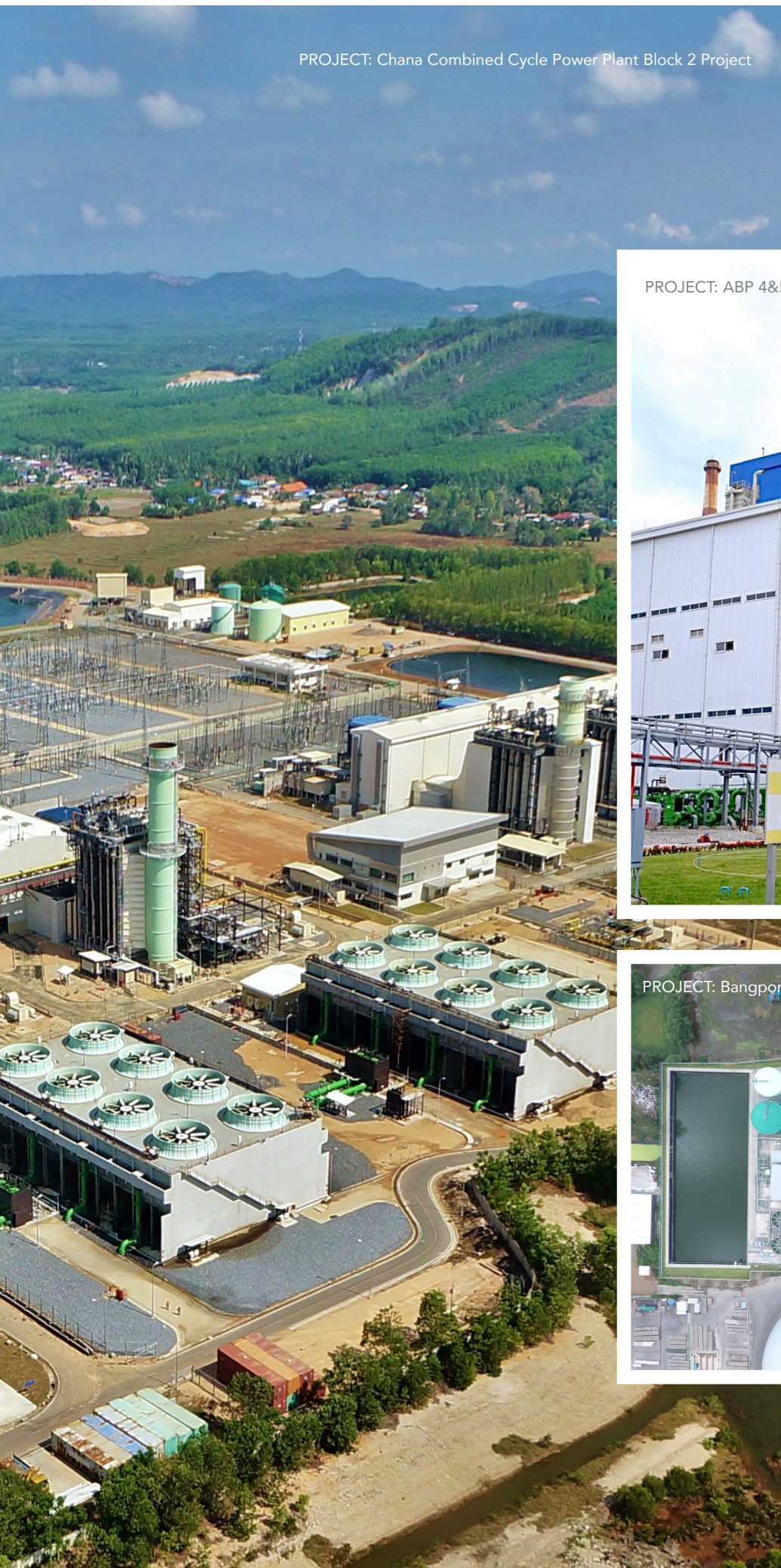


# INDUSTRIAL WORK POWER PLANTS





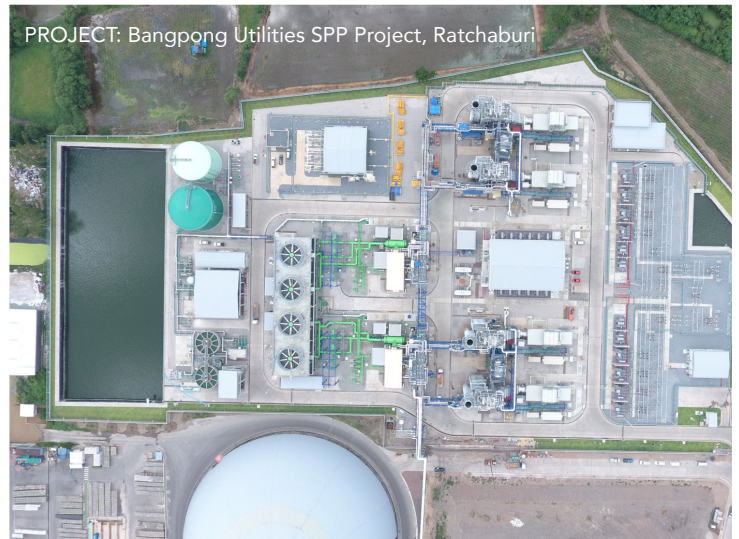
PROJECT: Chana Combined Cycle Power Plant Block 2 Project



PROJECT: ABP 4&5 Combined Cycle Power Plant, Rayong



PROJECT: Bangpung Utilities SPP Project, Ratchaburi







# INDUSTRIAL WORK FACTORY/ WAREHOUSE

With expertise in the construction of many factories and warehouses for all types of industrial sectors including Beverage, Bottling, Consumer and frozen food processing, Electrical appliances, and Logistics distribution owned by both International and Local corporations, NAWARAT has proven its competence by delivering projects with high quality construction skills and excellent resources.





PROJECT: Singha Beverage



PROJECT: Advance Prefab Factory



PROJECT: Mahasarakham Beverage Factory





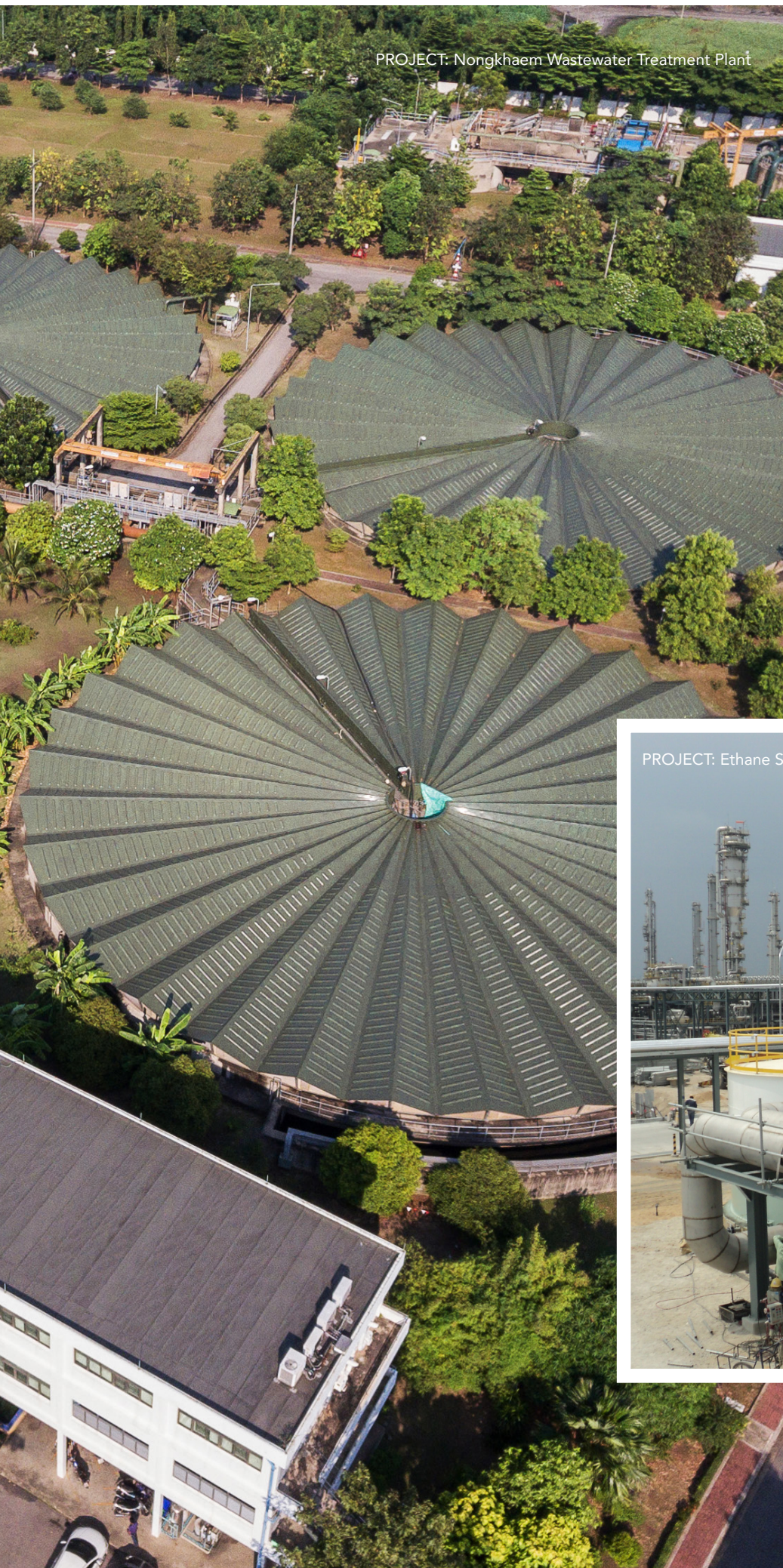


# INDUSTRIAL WORK TREATMENT PLANTS

NAWARAT has the capability to provide full scope service as Engineering, Procurement and Construction (EPC) Contractor for Wastewater treatment plants (WWTP). One of the largest WWTP owned by Bangkok Metropolitan Administration (BMA) is an example of great success project for NAWARAT alongside other privately owned projects like PTT Wastewater Treatment Plant.







PROJECT: Nongkhaem Wastewater Treatment Plant



PROJECT: Ethane Separation Plant





## CIVIL WORK

### HIGHWAYS/ROADS/ BRIDGES/METRO STATION/AIRPORT

Nawarat has abundant experience in national transportation infrastructure development projects such as roads, highways, bridges, railway and metro station. It has been active in extending its reach across regional boundaries also through its projects in Cambodia and Lao PDR. With capability to handle superstructure construction and sophisticated installation, NAWARAT is able to ensure successful completion of the projects for many recognized authorities in Thailand and nearby countries like the Department of Highways, Department of Rural Roads, Expressway Authority of Thailand, Bangkok Mass Transit System (BTS), and Asian Development Bank. With vast experience in Civil works, NAWARAT has expanded its construction activities towards the Airport projects as well.





PROJECT: Ratchapreuk Road Extension Phase 2

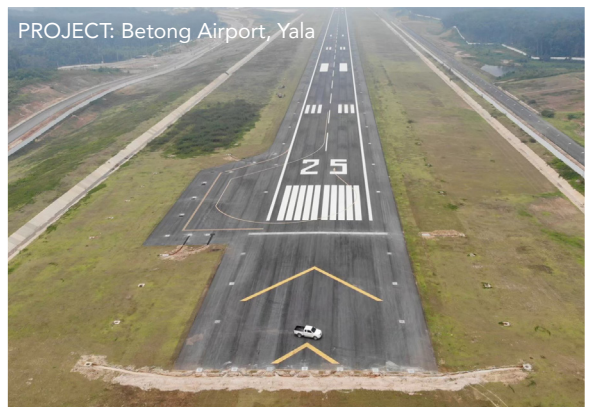
NAWARAT SUCCESS | CIVIL WORK



PROJECT: Construction of Highway NO.408  
Namkrajai-Koh Yor-A.Singhanakorn



PROJECT: Betong Airport, Yala



PROJECT: Bangkaew Toll Plaza



PROJECT: Motorway Bang Pa In - Saraburi -  
Nakorn Ratchasima







## CIVIL WORK

# INFRASTRUCTURE FLOOD PROTECTION

NAWARAT is continuously growing its Infrastructure business based on experiences and expertise accumulated over many years. It has diversified its approach towards Infrastructure through various projects related to industrial estate, terminal areas, and golf course construction. Ability to utilize innovative machinery and working methodology to cope with difficult site condition has always been NAWARAT's strength.

NAWARAT has actively participated in the construction of many Flood protection systems with its own design and installation expertise for both Industrial Estates and different Municipalities.





PROJECT: Lam Ta Khlong Reservoir



PROJECT: Asia Industrial Estate Suvarnabhumi



PROJECT: Homyai Flood Protection







PROJECT: Khlong Phra Khanong - Underground Power Transmission Line Project



PROJECT: MWA Water Transmission Tunnel from Outer King Road to Rama II Road



PROJECT: MWA Thapra





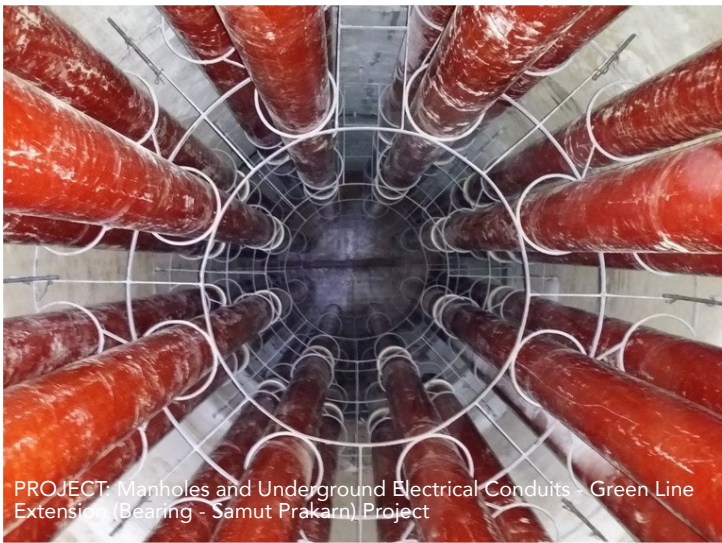


## TUNNELING AND UNDERGROUND WORK

As a pioneer, NAWARAT has core capabilities in mastering high quality and technically advanced Tunneling and Underground projects including Pipe jacking works. It has undertaken many challenging works ranging from Bangkok's wastewater collection system, potable water transmission system, and electrical transmission system to city's drainage system. One of the notable water drainage tunnels under Bang Sue Canal for the Bangkok Metropolitan Administration was recently completed by NAWARAT. Other notable experience includes the Manhole and Underground electrical conduits in Light Green MRT line for MEA and Water drainage tunnel in the Outer Ring Road for the MWA respectively.







PROJECT: Manholes and Underground Electrical Conduits - Green Line Extension (Bearing - Samut Prakarn) Project



PROJECT: Underground Power Transmission Lines, Khlong Phra Khanong



PROJECT: 230 kv Underground Transmission Line between Bangkok - Chidlom Terminal Station Project



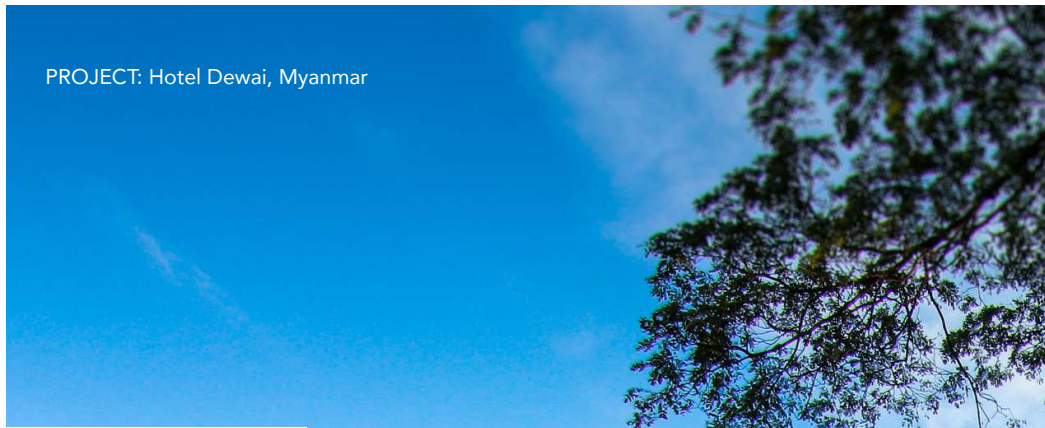




## TUNNELING AND UNDERGROUND WORK







PROJECT: Veranda Beach Hotel Pattaya



PROJECT: Kantary Hotel Nakhon Ratchasima







## BUILDING WORK

# HOTEL & CONDOMINIUM

With substantial experience in various building works, NAWARAT also focuses on the construction of premium seaside resorts, hotels and recreational projects. Whether its premium or low cost, high-rise or low-rise residential developments, NAWARAT's experience as turnkey contractor with the ability to work with both Local and Foreign designers has accumulated trust and praises from all our Clients and customers. References not only include projects in Thailand but also in nearby countries like Myanmar and United Arab Emirates with an aim to expand to more regions in the future.





PROJECT: The Crystal Ratchapruek Shopping Mall



PROJECT: Queen Sirikit Convention Center



PROJECT: Scg Experience Building



PROJECT: Porsche Center Pattanakarn







## BUILDING WORK

# COMMERCIAL BUILDING

NAWARAT has constantly demonstrated its expertise in the construction of various kind of commercial and office buildings. Some of the major references that have earned high recognition of quality amongst our Clients include National Convention Center, Shopping malls, Office, Showrooms, Hospital and University buildings.







## MARINE WORKS

# CONTAINER TERMINALS

NAWARAT has always supported country's marine logistics through its involvement in the construction of container terminal infrastructure. NAWARAT successfully completed the construction of Container Terminal owned by Hutchison Laem Chabang Terminal Limited in the Eastern seaboard.







PROJECT: Terminal Area C1 - C2 Development Laemchabang Port







## MARINE WORKS

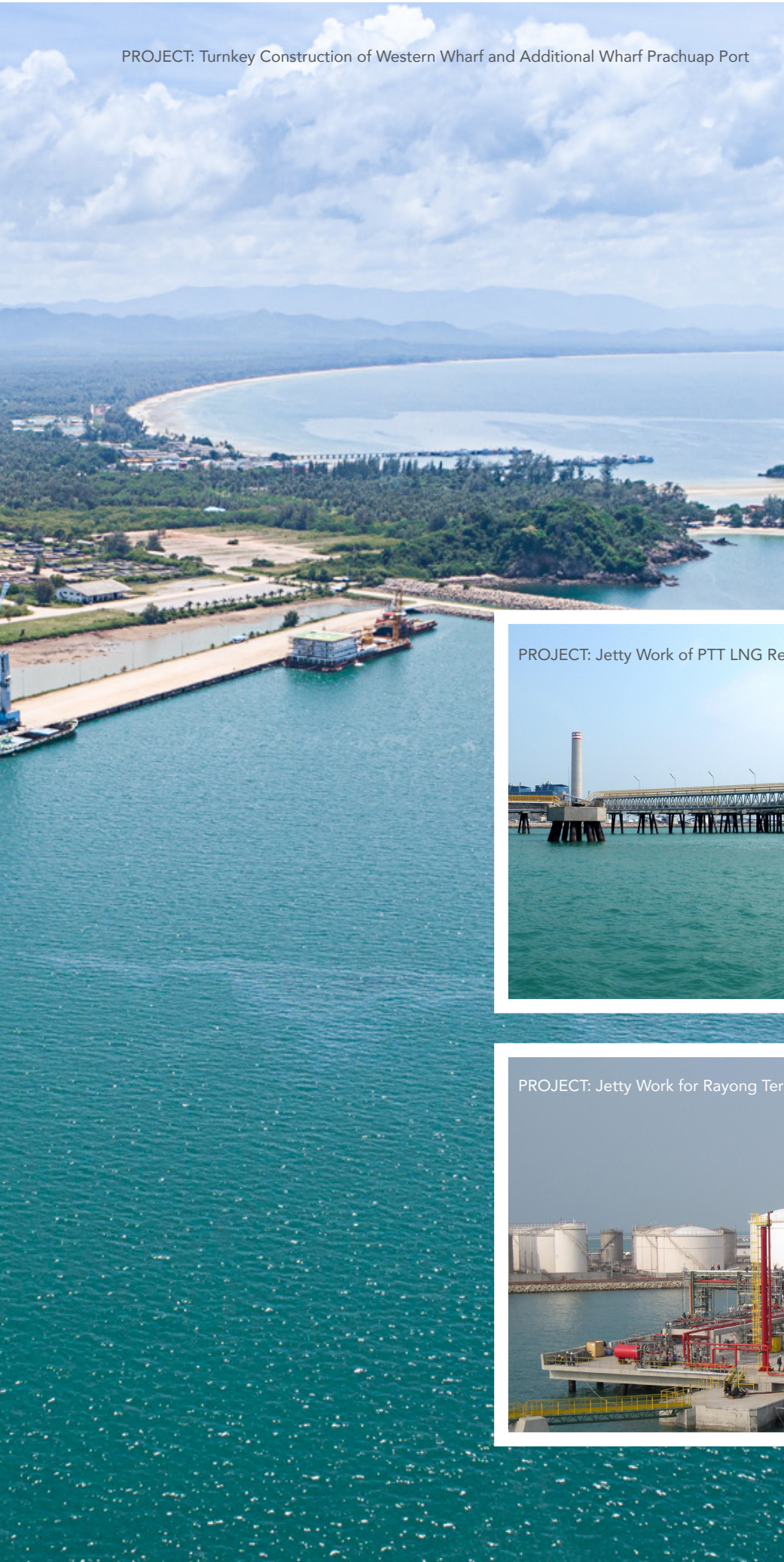
# PORTS/ BERTHS/ JETTIES

NAWARAT prides itself as a specialist in the construction of Marine work facilities such as public and private Industrial Ports, Berths, Jetties and Trestle in Thailand's Eastern and Southern Seaboard. NAWARAT's specialization in the Waterfront working condition highlights its strength as a Civil Work partner. Various projects carried out for PTT and Private entities in coordination with International corporations are evidence of its success.





PROJECT: Turnkey Construction of Western Wharf and Additional Wharf Prachuap Port



PROJECT: Jetty Work of PTT LNG Receiving Terminal Expansion Project, Rayong



PROJECT: Jetty Work for Rayong Terminal (SCG Dow Ltd)







# OVERSEAS WORK

NAWARAT has succeeded in spreading the wings of its construction businesses in the neighbouring regions such as Cambodia, Lao PDR, Myanmar, and Vietnam. NAWARAT is also proud to be a part of the construction of Movenpick Resort and Palm Laguna Residences in UAE. With the continuous growth in construction works, NAWARAT 's plan to extend its reach outside Thailand remains quite strong.







PROJECT: Theun Hin Boun Expansion Project, Laos PDR



PROJECT: Prek Pnov Bridge Construction Over Tonle Sap River, Cambodia



PROJECT: National Highways R3 Package, Laos PDR





# OVERSEAS WORK







PROJECT: Hotel Dawei, Myanmar



PROJECT: Nam Sana, Hydro Power Plant, Laos PDR



PROJECT: Nam Sana, Hydro Power Plant, Laos PDR





# DESIGN SERVICE ENGINEERING PROCUREMENT & CONSTRUCTION

NAWARAT is capable to provide design services as well as Engineering, Procurement & Construction (EPC) service with the ability to work with both local and international partners. Its experience with extensive projects such as large scale wastewater treatment plant, hydropower plant, etc., has proven its capabilities to both customers and partners. With a focus on delivering first class Project execution from beginning until end, NAWARAT always strives to build trust and maintain long-term client relationships thus marking its place in the national construction industry.







PROJECT: Nongkhaem Wastewater Treatment Plant



PROJECT: Nam Sana, Hydro Power Plant, Laos PDR



PROJECT: TS - TECH Saraburi New Factory



PROJECT: Port Chino Car Pack AVP



PROJECT: BIF Factory AVP





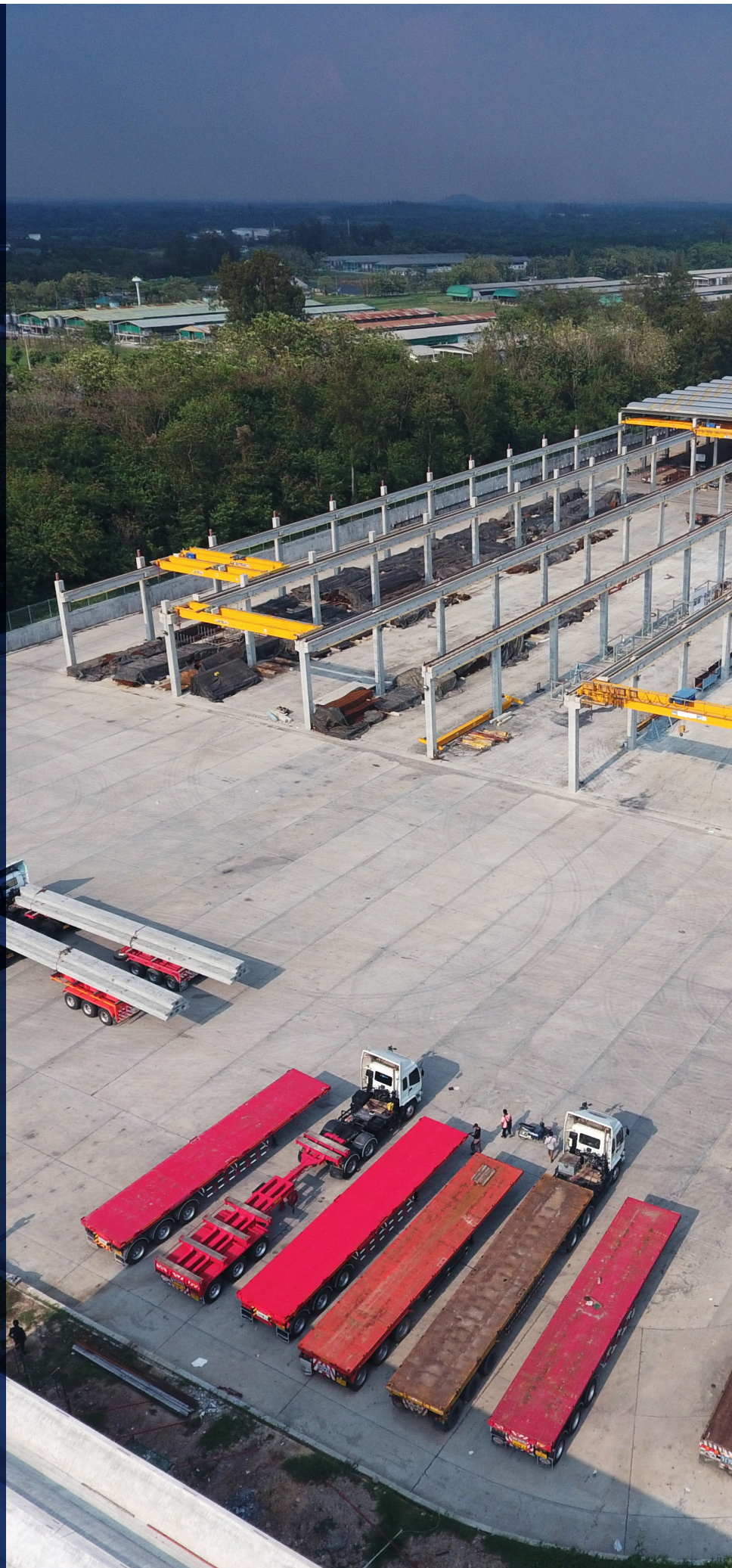
## MANUFACTURING

# PRECAST & PRESTRESSED

NAWARAT established its Pre-stressed concrete product factories in four different locations including Steel Fabrication Plants to supply its construction projects and also sell to the public. The products include precast concrete piles, pre-stressed concrete girders, precast concrete pipes for construction of wastewater treatment projects, parapets, concrete pre-cast slabs and sheet pile to protect from land subsidence, precast segmental tunnel lining, jacking pipes and precast shafts for underground works.

### Locations:

- Bangna-trad Concrete Yard
- Chonburi Asphaltic Concrete Plant
- Bang Nampriao Concrete Yard
- Banbueng Advance Prefab Co.,Ltd.
- Mahachai Precast Concrete & Pipe Plant





PROJECT: Advance Prefab Factory, Banbueng, Chonburi

NAWARAT SUCCESS | MANUFACTURING



PROJECT: Chonburi Asphaltic Concrete Plant



PROJECT: Pre-Cast Concrete Products and Bang Nampreaw, Chachoengsao







# MANUFACTURING STEEL & STRUCTURE FABRICATION

## Locations:

Bang Nampriao Steel Fabrication







PROJECT: Processed Steel Plants



PROJECT: Bangnonprie Steel Fabrication Plant

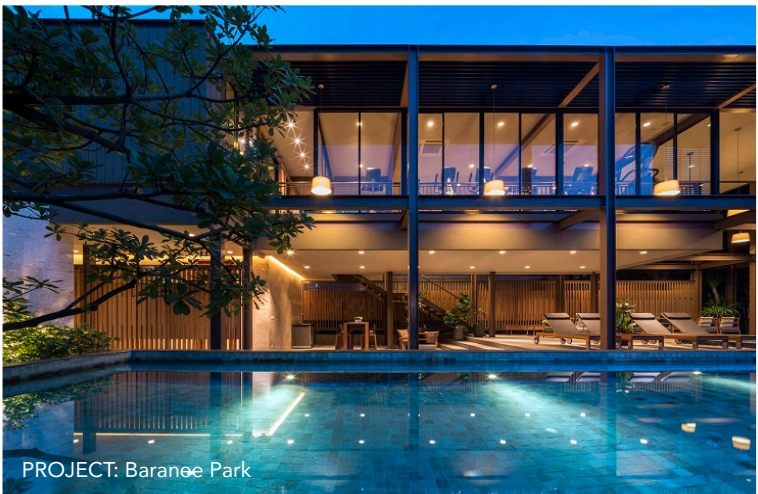


PROJECT: Processed Steel Plants





PROJECT: Baranee Residence



PROJECT: Baranee Park



PROJECT: Baranee Residence



PROJECT: Villa Baranee







## PROPERTY DEVELOPMENT

NAWARAT has efficiently expanded its construction experience into property development through both high rise and low rise residential projects. At all times, customer's requirements and quality of product and services has been the highest priority and key success factor in delivering its projects.

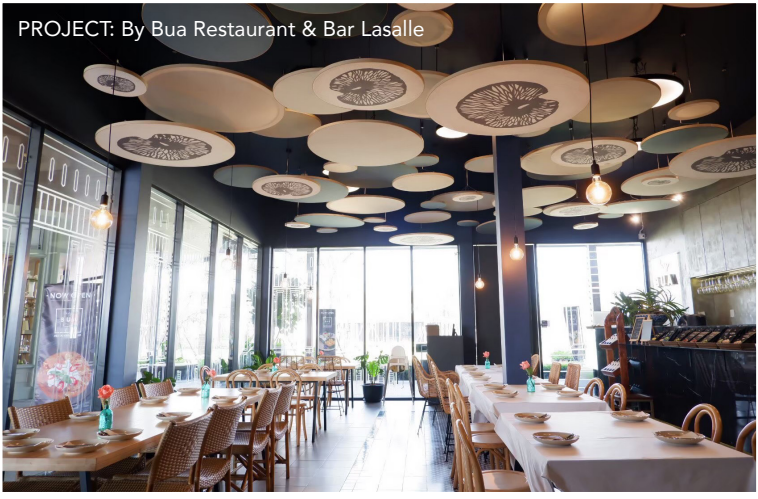




PROJECT: By Bua Restaurant & Bar Lasalle



PROJECT: L'OLIVA Italian Restaurant



PROJECT: By Bua Restaurant & Bar Lasalle



PROJECT: By Bua Restaurant & Bar Silom







## FOOD & RESTAURANT **TASTE MAKER**

Taste Maker Company Limited, was established as subsidiary for food industry Including restaurant and packaged consumer products for both domestic and export market.







# NAWARAT COMMUNITY

OUR PRACTICE AND  
RESPONSIBILITY





## SUSTAINABILITY DEVELOPMENT

To ensure that all aspects of the organization have direction toward sustainable development, the Company sets the vision as a guideline for conducting business and established the business plan or short term goal each year, both in term of value and of economy to be in line with the mission in order to grow the organization, based on the corporate governance principle and the sustainable development guideline.

The Company mainly conducts the construction business. In addition to maintaining the quality and standard of construction in order to deliver quality products and services in a timely manner, the Company also gives the importance to operate its business that is friendly to environment, has responsibility towards society and all stakeholders with fair and equitable treatment and administer transparently, verifiably and ethically in complying with the principles of good corporate governance (Environmental, Social and Governance: ESG).

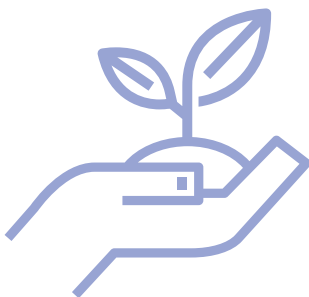
Nawarat Patanakarn Public Company Limited aims to sustainably conduct the business by balancing the economy, society and environment. The Company has applied the frameworks of organizational sustainability development or Triple Bottom Line (TBL), which focuses on three key business aspects: economy, society and environment, in the establishment of the operational goal to enhance the stable growth of the organization. The three aspects of the business operation are as follows:





## ECONOMIC

The Company has set objectives to develop the organization for continuous growth and long-term security. The Company operates the business with transparency, has risk management at appropriate level in order to generate satisfactory returns to shareholders, executives and employees, as well as make positive impact on the overall economy of the country.



## SOCIAL

The Company conducts its business with ethics and adheres to social responsibilities with acknowledgement that the growth of business is based on good society. Therefore, the Company's social responsibility gives an importance to fair management and development of human resources, respect on human rights, anti fraud and corruption as well as awareness of all groups of stakeholders and the national society at large.



## ENVIRONMENT

The operation of the Company as a contractor has impacts on society and environment on various aspects. The Company, therefore, gives importance to conduct its business with environmental responsibility. The Company has policy to operate its business and its work processes with awareness of environment, enhance efficiency of resources utilization and build good consciousness of environmental conservation in work place, community and society.



## STAKEHOLDERS ENGAGEMENT FOR SUSTAINABILITY DEVELOPMENT

The Company conducts its business in complying with the business code of conduct, adhering to responsibility and respect for the rights of all stakeholders, both inside and outside the organization to ensure that all stakeholders are fairly protected, treated with equality and receive benefits as expected from the business operation.

The Company realizes that all stakeholders are important for the constant operation of the business operation and for the growth of the Company.





## GOOD CORPORATE GOVERNANCE

The Board of Directors strongly believes that good corporate governance is one of the important factors to ensure the success of the company and enable the company to sustain continuous growth. The Principle on Corporate Governance is therefore adopted so that company's directors, management and employees can use it as the guidelines.

### THE COMPANY IMPLEMENTED 5 PRINCIPLES TO THE FOLLOWING:

#### 1. SHAREHOLDER'S RIGHTS

Shareholders have their ownership right in which they can control the Company by appointing the Board of Directors to act as their representative who has the right to make decisions on the Company's important changes. The Company should therefore encourage its shareholders to exercise their right.

The Company's committee has to put much importance to shareholder's rights and must not perform any actions that are considered a breach of their right.

#### 2. EQUALITY AMONG INDIVIDUAL SHAREHOLDERS

All shareholders, be its executives, a non-executives, or foreigner, be equally and equitably treated. The minority shareholders whose rights are breached should be compensated.

Since the shareholders' confidence that the Board of Directors and the management are committed to the appropriate use of their money is an important investment factor, the Board shall govern to ensure that shareholders receive equal treatment and are equally protected from infringement of their basic right as stated in the first principle.

#### 3. THE ROLE OF INTERESTED PARTIES

The interested parties should be cared for by the Company in accordance with the applicable law. The Board of Directors shall take into account the setting up of a promotional activity which helps encourage the cooperation between the Company and the internal parties in creation of financial prosperity and stability, and the business long-lasting existence.

The Board of Directors shall establish a policy in which there is a treatment to the interested parties in such a way that all their legal rights or ones according to the agreement made with the Company are concerned. There should not be any breach of the rights, and compensation measures for those who suffer damages from the infringement of right should be imposed.







#### 4. DISCLOSURE AND TRANSPARENCY

The Board of Directors should pay attention to the Company's activities in disclosing important information. This includes the disclosure of both financial information and other information, performed correctly, completely, transparently, and timely through an easy access and with equality and credibility.

The Company's important information includes financial report and non financial information in accordance with the Securities and Exchange Commission and the Stock Exchange of Thailand and other related information such as the duty performed throughout the year by the directors and the commissioner, business governance policy, the policy on social and environmental responsibility and observation of the aforesaid policies.

#### 5. RESPONSIBILITIES OF THE BOARD

The Board of Directors has an important role in governing the business for the best interest of the Company. The Board is responsible for performance of duties to the shareholders and is independent from the management.

The Board should have leadership, vision, and freedom in decision making for the best interest of the Company and shareholders as a whole. The Board should adopt a mechanism in which the Board and the Management can work under duty and role separation and govern the Company and adopt the system to ensure the Company's activities are carried out in compliance with laws and with good ethics.



# CSR

## CORPORATE SOCIAL RESPONSIBILITY



The construction business directly impacts the society and environment. The Company gives importance on the business operation that is socially and environmentally responsible in order to lead the Company to the true sustainability.

The Company has established a policy on social and environmental responsibility with commitment to be equitably responsible for all stakeholders. The Company does not only focus on CSR in process, but also on CSR after process in form of various activities.







## OVERALL POLICY

CSR in Process and CSR after Process are implemented by the Company to achieve this objective and drive the policy effectively and efficiently. The Corporate Social Responsibility Committee is responsible for managing corporate social responsibility projects in various fields and achieving actual results in practice. The Company has set a policy of social responsibility as follows:



### THE POLICY ON THE PROMOTION OF RELIGIOUS ACTIVITIES AND CHARITY

The Company has realized the importance in maintenance of all religious. It has donated money for restoration of religious places, shrines, sermon halls in monasteries, toilets, utilities infrastructure, electricity, water supply, telephone lines for temples in remote areas.



### THE POLICY ON EDUCATIONAL DEVELOPMENT ACTIVITIES

The Company has placed much importance to education and committed to participate in educational development to ensure Thailand becomes a learning society that leads to its sustainable development.



### THE POLICY TO PROMOTE SOCIAL ACTIVITIES AND SANITATION

The Company has constantly contributed support in activities of foundations and public charities to give help to socially disadvantaged people to improve their quality of life. Also, donations to those who suffered from several natural disasters with focus to relieve their hardship in many forms.





# SUBSIDIARY & ASSOCIATED COMPANY

---



## 1. Mana Patanakarn Company Limited

Mana Patanakarn Company Limited was founded on April 5, 2013 with 200 Million Baht of registered capital (2,000,000 ordinary shares at a par value of 100 Baht per share). The registered capital and paid-up capital is 1,100 Million Baht. The Company holds 100 percent shares in this subsidiary and completely paid the investment in ordinary shares.



## 2. Advance Prefab Company Limited

Advance Prefab Company Limited was founded on December 12, 2013 with 1 Million Baht of registered capital (10,000 ordinary shares at a par value of 100 Baht per share). The registered capital is 400 Million Baht. The Company holds 100 percent shares in this subsidiary and paid the investment in ordinary shares in the amount of 380 Million Baht which its remain in behind in paid amount of 20 Million Baht.

At present, Advance Prefab Company Limited operates to manufacture and sell pre-cast concrete products such as concrete piles, concrete slabs, and concrete fences and also to provide construction services, building and factory. At last year (2017) had income to sell pre-cast concrete amount of 102 Million Baht and construction income factory building amount of 90 Million Baht, total income in 2017 to amount of 192 Million Baht.



## 3. Taste Maker Company Limited

On November 17, 2016, Taste Maker Company Limited was registered as a juristic person with the Ministry of Commerce by issuing of 50,000 ordinary shares at a par value of 100 Baht per share calculating to the amount of 5 Million Baht. The Company holds 99 percent shares in this subsidiary and completely paid the investment in ordinary shares in the amount of 4,495,000 Million Baht. On July 11, 2017, Taste Maker Company Limited registered its capital increase by issuing 150,000 ordinary shares at a par value of 100 Baht per share resulting in the increase of its registered capital to 20 Million Baht. The Company paid the investment in 2017 at 85 Baht per share making the amount of investment in Taste Maker Company Limited total 17,700,000 Baht. Taste Maker Company Limited operates the food business which consists of fresh food, dried food, instant food, canned food, seasoning, and all types of beverages.



#### 4. Myanmar NWR Company Limited

In 2000, the Company invested in Myanmar NWR Company Limited, which is situated at 32, Hlaing Myint Moh Street 4, Ward 10, Hlaing Township, Yangon, Myanmar. The Company holds 100 percent of the shares for the purpose of supporting expansion of its construction contracting in the Union of Myanmar. The Company has its registered capital of Kyat 1,000,000, the paid-up capital of Kyat 500,000 or approximately three Million Baht. The subsidiary has not started operating yet because the overall economy of the Union of Myanmar and the legal system is not feasible.



#### 5. NWR (Cambodia) Company Limited

In the year 2007, the Company established NWR (Cambodia) Company Limited in Cambodia, in which the Company holds 100 percent of its shares to facilitate operations and supervision of construction services in Cambodia with the registered capital of 20 Million Riel (or approximately 200,000 Baht) and the paid-up capital is 17,000 Baht. The subsidiary started its work as a supervisor of the construction project of Tonle Sap Bridge, awarded by the private enterprise of L.Y.P. Group Co., Ltd. with the project value of 2 Million United States Dollar. Currently, the project has been completed.



#### 6. Utility Business Alliance Company Limited

In 2001, the Company invested in Utility Business Alliance Co., Ltd. to conduct the business of wastewater treatment plant management with investment portion of 50 percent. On November 11, 2003, the Company sold some parts of its investment to other investors causing the proportion of the investment to reduce to 33.33 percent. However, in the third quarter of 2006, the Company repurchased the investment from the outsider resulting in the Company's current investment in the proportion of 60 percent of the total registered capital of 40 Million Baht. The paid-up capital of this subsidiary is 40 Million Baht. For other shareholders of 40 percent, they are juristic persons that are not associated with the Company, neither in terms of directors nor shareholders.





# ASSOCIATED COMPANIES

---



## 1. C.I.N Estate Company Limited

In September, 2006, the Company invested in C.I.N. Company Limited to procure a land and develop it into a 47-storey condominium for the purpose of residential and forward sale. The 561-unit condominium named "The Issara Ladprao" is located on Ladprao Road, between Soi 12 and 14 and has project value of 2,700 Million Baht. Now, the task of construction has been completed. At present, the company is launching another development project called "ISSI Condo" located adjacent to Suksawat Road, with the project price amounting to Baht 1,850 million.



# NAWARAT STANDARD RECOGNITION & CERTIFICATION



## OUR ACHIEVEMENT

### Recognition & Certification

NAWARAT is keen on achieving high standard of quality, environmental and safety management in all its business areas. This has enabled the company to obtain various certificates such as the following:

- ISO 9001: 2015 for Quality Management
- ISO 14001: 2015 for Environmental Management
- OHSAS 18001:2007 and TIS 18001:2011 from Bureau Veritas Certification



The company has resolved the resolution to attend as a part of the Thailand Private Sector Collective Action Coalition Against Corruption (CAC) of Thailand Institute of Directors (IOD) for anti-corruption. At the present, the Company already joined the declaration of intent on 24th march 2017.



# PROJECT REFERENCES

## PAST EXPERIENCE IN RECENT YEARS

### BUILDING

Kantary Hotel Korat, Nakhon Ratchasima	B.L.Hua & Co.,Ltd.
PTT Oil Business Academy, Ayutthaya	PTT Public Company Limited
Veranda Beach Pattaya Hotel, Pattaya	Veranda Beach Pattaya Co., Ltd.
The Crystal Ratchapruek Shopping Mall, Nonthaburi	The Crystal Ratchapruek Retail Company Limited
ZPELL Rangsit Shopping Center, Patumthani	Rangsit Plaza Co., Ltd.
Toyota Chaiyapruk Car Showroom, Office & Car Park, Nonthaburi	Toyota Muangnont Co., Ltd.
Porsche Centre Pattanakarn, Bangkok	AAS Auto Service Co.,Ltd
The Crystal Ram In Tra Parking Building, Bangkok	Kiat Sahamit Co., Ltd.
Kantary 304 Hotel, Prachinburi	M & H Manufacturing Co., Ltd.
Asia Industrial Estate Sales Office, Samutprakarn	Asia Industrial Estate Co., Ltd.
S12 Station and Stabling Yard, BTS Silom Extension Line	STAS Joint Venture (Sub contractor)
69, 24 KV. Building and Its Component at Klongsapa-samit Substation	Metropolitan Electricity Authority
Baan Ua-arthorn at Bangkaew, Samutsongkram	National Housing Authority
SCG Experience Lifestyle Center, Leab Ramindra Expressway Road, Bangkok	Siam Cement Group
Baan Ua-arthorn at Soi Wat Sri Varea Noi, Samutprakarn	National Housing Authority
Baan Ua-arthorn at Soi Wat Sa Kla, Samutprakarn	National Housing Authority
The Madison Codominium, Sukhumvit, Bangkok	Rojana Property Co.,Ltd.
Army Building(Tor Mor) at Thaweewattana Palace	Bangkok Metropolitan Administration
Teepungkorn Rasmeechoj Nursery Center Building at Ampornsathan Palace	Bangkok Metropolitan Administration
Gymnasium and Meeting Hall Building at Thaweewattana Palace	Bangkok Metropolitan Administration
Alpha 'N.2' Building at Thaweewattana Palace	Bangkok Metropolitan Administration
Ayodthaya Golf Club House	Bangpa-in Golf Co.,Ltd.
BAN ISSARA Project Part 2,3,4 Residences	Chan issara Development Public Company Limited
Ban Poo Lom Condominium at Hua-Hin	Ban Poo-Lom Company Limited
Ban San-Ploen Condominium at Hua-Hin	Sansiri Public Company Limited
MANTHANA Residences Project (ON-NUCH Ring road)	Land and House Public Company Limited
CHAIYAPRUEK TEPARAK (PART I+II) Residences Project	Land and House Public Company Limited
BAN BARAMEE Residences Project (RANGSIT KLONG SAM road)	Ruengrapee Company Limited
Bangbon and Udomsuk Property Project	Krungthep Land Co.,Ltd.
Three Building in Sukhothai Palace	Bangkok Metropolitan Administration
Santiporn Park at Rajdamnern Road	Ministry of Finance
Chamchuree 5 Building Project (+ Interior Decoration)	Chulalongkorn University
Foreign Affair Building, Ministry of Foreign Affair	Ministry of Foreign Affair
Miracle Grand Hotel	Miracle Grand Hotel Co., LTD.
Technology Promotion Association (Thailand - Japan) Building	Technology Promotion Association (Thailand - Japan)
ATP Office Building and Car Park Building	Sutham viriya Co.,Ltd.

### WAREHOUSE AND INDUSTRIAL PLANTS

Renovate UHT Plant, Navanakorn, Ayutthaya	Oishi Trading Company Limited
Mahasarakham Beverage Factory, Mahasarakham	Singha Beverage Co.,Ltd.
Phongphan Barnsong Material Trade Building, Suratthani	Quality Star Engineering Co., Ltd.
Logistic Warehouse and Flood Protection, Navanakorn, Ayutthaya	Oishi Trading Company Limited
CPF-New Distribution Center, Chachoengsao	Charoen Pokphand Foods Public Company Limited
Light Bulb Plant (Endo Brand), Samutprakarn	Taisei (Thailand) Co., Ltd.(Sub-contractor)
CP Sausage Factory, Bangkok	CPF (Thailand) Public Company Limited
Bottling Plant (Extension Part), Nakhonpathom	Singha Beverage Co.,Ltd.
Water Filter, Beverage Plant, Suratthani	Suratthani Beverage Company Limited
TS-TECH Saraburi New Factory, Saraburi	Tosplant Engineering (Thailand) Co.,Ltd.
Cargo Container and X-ray Inspection System, Chonburi	Laem Chabang Port
Material Store and Maintenance Building, Amata City, Rayong	Amata B.Grimm Power(Rayong)2 Co., Ltd.
IRPC Propylene Plant Project (Subcontractor-GS Engineering & Construction Corporation)	IRPC Public Company Limited
VRM Factory MCL4 Project	Magotteaux Co., Ltd.
Amata B.Grimm Power Work Shop and Warehouse building at Amata Nakorn	Amata B.Grimm Power3 Co., Ltd.
Construction of Foundation for New Nitrogen Plant	Thai Oil Public Company Limited
Drinking Water Production Plant, Phranakorn Si Ayutthaya	Wang Noi Beverage Co., Ltd.
Singha Brewery at Banglen, Nakhonpathom, Thailand	Singha Beverage Co.,Ltd.
Terminal Area C1-C2 Development Laem Chabang Port [3rd Contract]	Hutchison Laemchabang Terminal Limited
Terminal Area C1-C2 Development Laem Chabang Port [2nd Contract]	Hutchison Laemchabang Terminal Limited
Garbage Transfer Station (New system) (NWR-Samcon JV)	Bangkok Metropolitan Administration
Siam-Press Printing Factory at Sinsakorn Industrial Estate, Samutakorn	Siam Press Printing Factory

LAEMCHABANG Container X-Ray Scan Project Phase II	Nutech Company Limited
New Factory (BOONTHAVORN Section 2) Project, Patumthani Province	Asia Motor Service Center Co.,Ltd.
OSBL Building at ASIA Industrial Estate, Rayong, Thailand	Indorama Petrochem Limited.
Turbine & Generator Rotor Repair Building	Electricity Generating Authority of Thailand
BPB TGP Laem Chabang Line 2 Project (Trade Package No. TP-02)	BPB Thai Gypsum Products PCL.
MAIS Building Project - at Amata Nakorn Industrial Estate	Monde Nissin (Thailand) Co.,Ltd.
Lubricant Factory at Samutsakhon	PSP Specialty Co., Ltd.
Imco Pack Factory and Office Building	Imco Pack Co., LTD.
Construction and Completing The Hot Coil Yard	The Siam United Steel Co., Ltd.
Sanyo Assembly Plant and Work Shop	Sanyo Universal Electric Co., Ltd.

### BRIDGE, HIGHWAY AND EXPRESSWAY

Motorway Bang Pa In - Saraburi - Nakorn Ratchasima (3 Section)	Department of Highways
Roadway Extension from Highway No.7 Route of Bangkok - Ban Chang	Department of Highways
Railway Overpass the Train Route No.1012, Nakhon Pathom	Department of Highways
Roadway Overpass the Highway No.7 (Km.107+200) Section 4, Sriracha, Chonburi	Department of Rural Roads
Railway overpass of train route of Don Si Non - Ban Pho, Chachoengsao	Department of Rural Roads
Build and Reconstruction a connecting route to Expressway Kanchanaphisek, Samutprakarn	Expressway Authority of Thailand
Overpass Crossing Intersection Highway No.3256 with Highway No.3268	Department of Highways
Ratchaphruek Road Expansion Phase 2 (Section 2) (Soi Charansanitwong 13 - Khlong Mahasawad), Bangkok	Department of Rural Roads
Bypass from Highway No.3 Section 3 (Bang Pu - Ban Khlong Krabue), Samutprakarn	Department of Highways
The Link between Bang Phli-Suksawat Expressway and the Industrial Ring Road	Tipakorn Company Limited
The Elevated Covered Path Beneath Expressway, Connecting Faculty of Medicine Building, Rama Hospital	Rama Hospital
Highway No.7 Chonburi - Pattaya Section 3	Department of Highways
Bridge Crossing Chongsadao Canal, Rojana Industrial Park Project, Section 6 (Phase 8).	Rojana Industrial Park PCL.
Bridges Over River Along National Road No.4 section; Koh Kong-Sre Ambel, Cambodia	Department of Highways
Road Support NBIA (Part1), At intersection of Highway Soi On-Nuch (3.4km.)	Department of Rural Roads
Turnkey Construction Bridge and Road at Rojana Industrial Park	Rojana Industrial Park PLC.
Turnkey Construction Over-pass Bridge at Buddhamonthon saiz-Boromratchonhee road	Sino-Thai Engineering & Construction PLC.
Highway NO.357 By-pass -A.Muang Phase 3 (Section 1) SUPHANBURI, Thailand	Department of Highways
Over pass at ROUTE NO.323 Railway Crossing at AMPHUR BAN PONG, Thailand	Department of Highways
Highway NO.408 NAMKRAJAI-KOH YOR -A.SING-HANAKORN (Section 2) SONGKHLA, Thailand	Department of Highways
Access A&E Highway of Interchange ROM KLAO	Tipakorn Company Limited
Highway A.BANG PARE -A.DAMNOENSADUAK (Section 1) RATCHABURI, Thailand	Sub contractor for SAHAKARNWISAWAKO-RN Co.,Ltd.
Extraordinary Highway No.7 (Bangkok-Chonburi, Srinakarin-Suwanabhumi Airport Section) / no.2/2547	Department of Highways
Highway No.1 Kampheang Phet - Tak - Lampang Section 4/ ADB/LN 1391-THA(3)	Department of Highways
Highway From Teparak to Bangplee / no. / no.22 / 2538	Department of Highways
Ekamai-Ramintra Rd. Sect. Soi Sukha-Nual Chan	Bangkok Metropolitan Administration
Bangkok-Chonburi New Highway Project Section 2E / No. OECE/TVX-11(6)	Department of Highways
Expressway Arj-Narong -Ram-intra Section 8 Highway ,8 Sukha-Nualchan	Express way and Rappid Transit Authority of Thailand

### CIVIL WORK

Design and Construction of Infra-Structural Works for Phase 1/3&1/5 and Phase 2/1&2/3 at Asia Industrial Estate (Suvarnabhumi)	Asia Industrial Estate Company Limited
Improvement Drainage System at Chitralada Palace	Bangkok Metropolitan Administration
Improvement Roads and Drainage System at Dechochai Palace	Bangkok Metropolitan Administration
Work of Water Supply Pipe Replacement of Laem Chabang Port Stage 1	Port of Thailand
Advance Earthworks (Contract 1) - Terminals D1, D2 & D3 at Laemchabang	Hutchison Laemchabang Terminal Limited
Terminal Area C1-C2 Development Laem Chabang Port [1st Contract]	Hutchison Laemchabang Terminal Limited
Road and Public Utility Rehabilitation (No.2) at Amporn Sathan Palace, Bangkok	Department of Public Works
Solid Waste Transfer Station [SAMCON NWR-JV]	Bangkok Metropolitan Administration
Utilities System of Promenade-Home	Tararom Enterprise Public Co.,Ltd.
Utilities System of Ayodthaya Golf Course	Ayodhaya Golf Course/Bangpa-in Co.,Ltd.
Road and Public Utility Rehabilitation at Amporn Sathan Palace, Bangkok	Department of Public Works
General Earth Work and Site Preparation, Bang Bo Samutprakarn	ABB Alstom Power
Laem Chabang Internation Terminal B5 Pavement & Associated Work	Laem Chabang Internation Terminal Co., Ltd.
Access Road EPEC Project	ABB Power Generation SDN BHD.



## WATERFRONTS AND JETTIES

Laem Chabang Port A and Facilities	Port Authority of Thailand
Jetty Work of PTT LNG Receiving Terminal Expansion Project Phase 2, Rayong (Subcontractor-Posco Engineering Co., Ltd)	PTT LNG Company Limited
Laem Chabang Service Port	Port of Thailand
Jetty Development and LNG Receiving Terminal(Subcontractor-GS Engineering & Construction Corporation)	PTT LNG Company Limited
Jetty Work for Rayong Terminal (Subcontractor-Daewoo Engineering (Thailand) Co.,Ltd)	SCG Dow Co.,Ltd
TurnKey Construction of Western Wharf and Additional Wharf Prachaup Port Works Bangsaphan Prachaup-kirikhan	Prachaub Port Co., Ltd.
Construction of Extension Berths B1 , Laemchabang Port	LCB Container Terminal 1 Limited

## POWER PLANT

SK&TP 2 Gas-Fired Cogeneration Power Plant Project (EGCO) Ratchaburi (Subcontractor-Mitsubishi Corporation)	Banpong Utilites Co.,Ltd
Bowin Combined Cycle Cogeneration Plant Project (Subcontractor-TPSC (Thailand) Co.,Ltd.)	Bowin Clean Energy Limited
ABPR4&5 Combined Cycle Cogeneration Plant Project (Subcontractor-TPSC (Thailand) Co.,Ltd.)	Amata Nakorn B. Grimm Power 4&5 Ltd.
Nam Sana - Hydroelectric Power Project	Electricite Du Laos
Wang Noi Combined Cycle Power Plant Block 4, Ayut-thaya (Subcontractor-Marubeni Corporation)	Electricity Generating Authority of Thailand
Chana Combined Cycle Power Plant Block 2, Songkhla (Subcontractor-Marubeni Corporation)	Electricity Generating Authority of Thailand
ABPR1 CCCP and ABPR2 CCCP at Amata City Industrial Estate, Rayong (Subcontractor-TPSC (Thailand) Co.,Ltd.)	Amata B.Grimm Power (Rayong)2 Ltd.
Tri Energy Power Plant, Ratchaburi	Black & Veatch ( Thailand ) CO.,LTD.
500 kV Switch Yard at Wang Noi , Ayuthya.	Electricity Generating Authority of Thailand
120 MW CCPP Rojana Power Plant Project	Thai Jurong Engineering Co., Ltd.
Super Structure for Wang Noi CCPP Power Plant, Ayuthya. (Sub Contract of Mitsubishi Corporation Co., LTD.)	Electricity Generating Authority of Thailand

## SPECIAL

Track Doubling Project Eastline Huamark to Chachuengsua (Subcontract of A.S. Associated Engineering (1964) Co., Ltd.)	State Railway of Thailand
Track Doubling Project ( Package 2 ) Section 2 -South-line Tailing Chan to Nakorn Pathom (Subcontract of A.S. Associated - TAKKEN Joint Venture)	State Railway of Thailand

## DAMS, CANALS AND WATERWORKS

Flood Protection System Phong Pheng Community Area, Pa Mok District, Ang Thong Province	Department of Public Works and Town & Country Planning
Flood Protection System Construction of Omnoi Communities Area Phase 4, Kratumban District of Samutsakhon	Department of Public Works and Town & Country Planning
Improvement Drainage System at Sukhothai Palace	Bangkok Metropolitan Administration
Reinforced Concrete Dam - Thawiwatthana Canal	Department of Drainage and Sewerage
Reinforced Concrete Dam - Sawat Canal	Department of Drainage and Sewerage
Flood Protection System Construction of Omnoi Communities Area Phase 3, Kratumban District of Samutsakhon	Department of Public Works and Town & Country Planning
Flood Retaining Wall for 115/22 kV Remote Substation 3	Amata Nakorn B. Grimm Power 4&5 Ltd
Flood Wall Singha Beverage, Nakhonpathom	Singha Beverage Company Limited
Drainage System - Bangtoei Canal	Bangkok Metropolitan Administration
Flood Wall around Lad Krabang Industrial Estate	Industrial Estate Authority of Thailand
Flood Protection System Construction of Omnoi Communities Area Phase 2, Kratumban District of Samutsakhon	Department of Public Works and Town & Country Planning
Construction of Flood defences in Rojana Industrial Estate (Ayutthaya) (subcontractor of Italian-Thai Development PCL.)	Rojana Industrial Estate Company Limited
Dikes to prevent flooding along the South of Rangsit Prayoosak canal, start at Chulalongkorn Water Gate through the mouth of Banmai Canel border of Chaopraya River.	Department of Public Works and Town & Country Planning
Flood Protection System Construction of Omnoi Communities Area Phase 1, Kratumban District of Samutsakhon	Department of Public Works and Town & Country Planning
Theun-Hinboun Expansion Project - Dam in Lao (Subcontractor of CMC Di Ravenna)	Theun-Hinboun Power Company Limited
Theun-Hinboun Expansion Project - Spillway Concrete Work (Lao) (Subcontractor of Vjithphan Construction Company Limited)	Theun-Hinboun Power Company Limited
Tha-Chin River Syphon, Nakhorn-Pathom	Metropolitan Waterworks Authority
Lamtakhong Pumped Storage Project. (JV. With Vianini Lavori S.p.A. and Dragados y Construcciones S.A.)	Electricity Generating Authority of Thailand
Supply and Installation of Trunk mains Distribution Pipelines	Metropolitan Waterworks Authority
Trunk Main, Distribution Pipe Line and Related Works PITH - 501	Metropolitan Waterworks Authority

## WASTEWATER TREATMENT SYSTEM PROJECT

Restoration Project of Wastewater Pipe System and Wastewater Treatment System at Thaweewattana Palace	Bangkok Metropolitan Administration
Restoration Project of Wastewater Pipe System, Royal Controlled Area 904 Phase2 Part2	Bangkok Metropolitan Administration
Restoration Project of Wastewater Pipe System, Royal Controlled Area 904 Phase2 Part1	Bangkok Metropolitan Administration
Wastewater Treatment System, Dechochai Palace	Bangkok Metropolitan Administration
The Comprehensive Wastewater Treatment Plant Project	PTT Public Company Limited
The Wastewater Treatment System at the area of On-Nuch garbage elimination station, Bangkok	Bangkok Metropolitan Administration
Construction the Oleaginuous Trap for develop environment at the area of On-Nuch garbage elimination station, Bangkok	Bangkok Metropolitan Administration
Reconstruction the Wastewater System in 904 Palace	Bangkok Metropolitan Administration
Reconstruction the Wastewater System in 904 Palace	Bangkok Metropolitan Administration
Turnkey Construction of Bangkok Wastewater Project Stage-4 / ๓๖๖.17/2545 (BMA-4) (NWR, ITD, CNT & AS JV)	Bangkok Metropolitan Administration
Bangkok Wastewater Project Stage-4 Works Zone 2 (Lateral A,Lateral B) (Subcontractor of CHRISTIANI & NIELSEN (THAI) PCL.)	Bangkok Metropolitan Administration
Bangkok Wastwater Project Stage 1 (Part 2) / ๓๖๖.73/2544 (Subcontractor of Italian Thai Development PCL.)	Bangkok Metropolitan Administration
Turnkey Construction of Nongkhaem-Phasicharoen and Ratburana Wastewater Treatment Plant and Collection System Project	Bangkok Metropolitan Administration
Drainage and Wastewater System for the Municipality of Ratchaburi	Department of Public Work
Local Hopsital Waste Water Treatment Project ; North of Thailand	Ministry of Public Health

## MANHOLE, UNDERGROUND DUCT BANK, PIPE JACKING AND TUNNELING WORK

Manholes and Underground Electrical Conduits - Light Green MRT Line (Subcontractor-CH. Karnchang Public Co., Ltd.)	Metropolitan Electricity Authority
Drainage Tunnel under Bangsue Canal from Ladprao Canal to Chao Phraya River	Bangkok Metropolitan Administration
Underground Pipe - Ratchaphruek Road Extension Phase 2 (Section 2)	Metropolitan Waterworks Authority
Drilling Water Tunnel for Flood Protection System Phase 1 - Chiangmai (Subcontractor-Italian-Thai Development PCL)	Department of Public Works and Town & Country Planning
Underground Pipe in Ratchadaphisek Rd., Kamphaeng-phet Rd. and Phaholyothin Rd.	Metropolitan Waterworks Authority
Improvement the drainage system area at the Meng Seng canal inside the Ampornsatana Palace.	Bangkok Metropolitan Administration
Improvement the Wastewater Collection System inside the control area in HIM majesty 904 phase 1	Bangkok Metropolitan Administration
Wastewater Collection System more from the extended area (addition) at the NEW LAND	Bangkok Metropolitan Administration
Water Transmission Tunnel, Outer Ring Road (G-MC-7D/2)	Metropolitan Waterworks Authority
Underground Transmission Line for Bang Bua Thong Substation [NWR-Straga 80:20]	Metropolitan Electricity Authority
Water Transmission Tunnel From Outer Ring Road to RAMA II Road G-TN-6C [NWR-AS JV]	Metropolitan Waterworks Authority
Utility Tunnel (TMT. Banpho Plant)	Nantawan Company Limited
Construction of Waste Water Collection Pipe System at Taweewattana Palace	Bangkok Metropolitan Administration
Raw Water Canal System and related works of MWA for THACHIN RIVER SYPHON	Metropolitan Waterworks Authority
Manhole and Underground Duct bank for Bangkok-Noi Substation / Contract No.๔๓๖.๓ 1/2542	Metropolitan Electricity Authority
Manhole and Underground Duct bank for Bangkok-Noi Substation / Contract No.๔๓๖.๓ 3/2542	Metropolitan Electricity Authority
Water Transmission Tunnel System at RAMA 2 (MWA. Contract No.1-MCH-6/4)	Metropolitan Waterworks Authority
Water Transmission Tunnel System at Lad-Krabang G-BC 5C for Metro Water Work Authority (Subcontractor)	Summit Grade Ltd. Part

## FOREIGN COUNTRIES

Road Construction from Muang Khob (Section A: Km 20+000 to Km 62+600) and Road Improvement in Muang Xiang Hone, Laos PDR	Ministry of Public Works and Transport, Department of Roads, Laos PDR
Prek Phnov Construction Bridge(Over Tonle Sap River)	L.Y.P. Group Co.,Ltd.
Road Work Construction part : Prek Phnov Bridge to Road No.6A	L.Y.P. Group Co.,Ltd.
HCMC Environmental Sanitation Project, Ho Chi Minh City , Vietnam	People's Committee of Ho Chi Minh city
National Highway R3 Package B : Ban Sod-Nam Lung, Laos PDR. (km.84.0-km 160.8)	Ministry of Communication Transports Road and Construction of Laos PDR.
Moevenpick Resort & Spa and Paim Laguna Residences, DUBAI , UAE.	Seven Tides Limited
Rehabilitation of NR3 & NR61, Cambodia	Ministry of Public Works and Transport, Cambodia
Battambang Town Drainage (D2F2), Cambodia	Ministry of Public Works and Transport, Cambodia
Primary Road Reconstruction Project Package No.5B, 5C	Ministry of Public Works and Transport, CAMBODIA
Concrete Pavement Road AT Thakhek, Laos PDR.	Prapatsorn Limited Patrner Ship
Road Construction Tha Due - Phon Ton, Vientien, Laos PDR.	Kingdom of Thailand Ministry of Transport and Communication Department of Highway
Meeyahta Internatinal Hotel (MIHL), Myanmar	Meeyahta Internatinal Hotel Co.,Ltd.



# CONTACT

## MAP



### NAWARAT PATANAKARN PUBLIC COMPANY LIMITED

18TH - 19TH FLOOR, BANGNA TOWER A, 2/3 MOO 14, BANGNA - TRAD ROAD, KM.6.5  
BANGKAEW, BANGPLEE, SAMUTPRAKARN 10540 THAILAND

**TEL: +66 (0) 2730 2100 FAX: +66 (0) 2751 9484**

**Myanmar NWR Company Limited** 13.664338, 100.679820

32, HLAING MYINT MOH STREEL 4, WARD 10, HLAING TOWNSHIP YANGON, MYANMAR

**Utility Business Alliance Company Limited** 13.664338, 100.679820

123 VIPHADEE - RANGSIT ROAD, JOMPOL, JATUJAK, BANGKOK, THAILAND

**NWR (Cambodia) Company Limited** 13.664338, 100.679820

PHUM 3, SANGKAT MUOY, MITTAKPHEAP, BEAH SIHANOUK, 18201, CAMOBDIA

**Mana Patanakarn Company Limited** 13.664338, 100.679820

18th FLOOR, BANGNA TOWER A, 2/3 MOO 14, BANGNA - TRAD ROAD, KM.6.5 BANGKAEW, BANGPLEE, SAMUTPRAKARN 10540 THAILAND

**Advance Prefab Company Limited** 13.664338, 100.679820

18th - 19th FLOOR, BANGNA TOWER A, 2/3 MOO 14, BANGNA - TRAD ROAD, KM.6.5 BANGKAEW, BANGPLEE, SAMUTPRAKARN 10540 THAILAND

**Taste Maker Company Limited** 13.664338, 100.679820

18th FLOOR, BANGNA TOWER A, 2/3 MOO 14, BANGNA - TRAD ROAD, KM.6.5 BANGKAEW, BANGPLEE, SAMUTPRAKARN 10540 THAILAND



# MEMO

NAWARAT PATANAKARN PUBLIC COMPANY LIMITED



# MEMO

NAWARAT PATANAKARN PUBLIC COMPANY LIMITED









**NAWARAT**

**Nawarat Patanakarn Public Company Limited**

T : +662 730 2100 F : +662 751 9484 E : [sales@nawarat.co.th](mailto:sales@nawarat.co.th)  
A : 18th-19th Floor, Bangna Towers (A), 2/3 Moo 14, Bangna-Trad Road, 6.5 km,  
Bangkaew, Bangplee, Samutprakarn 10540, Thailand

[www.nawarat.co.th](http://www.nawarat.co.th)

